

## Purpose

To define the lot coding system used at Dr. Bronner's in accordance with applicable standards to maintain traceability systems.

## Scope

All finished products sold by Dr. Bronner's.

## Key Terms

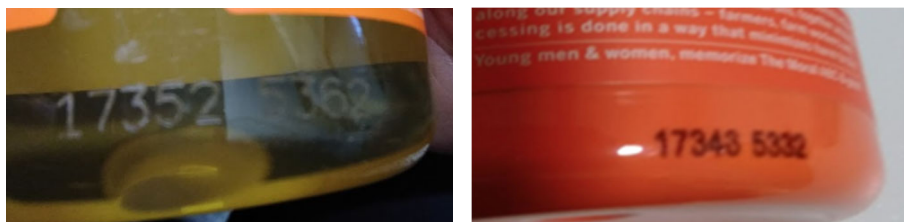
**Lot Code or Lot Number** - An identification number assigned to a particular quantity or lot of material from a single manufacturer. Lot numbers can typically be found on the outside of packaging.

## Lot Coding Practices Per Product Line

The following is a comprehensive description of lot code practices for all of Dr. Bronner's product lines.

### Liquid Soap (Castile & Pump)

**Production Run Coding:** Each bottle has a five-digit Julian date to indicate the fill date followed by the four-digit bulk lot code. For example, 17352 5362, which would be found at the bottom of the label, would be read as December 12th, 2017 bottling of bulk lot 5362. See figures below.



*Figures #1 and 2-Castile Soap (left), Pump Soap (right)*

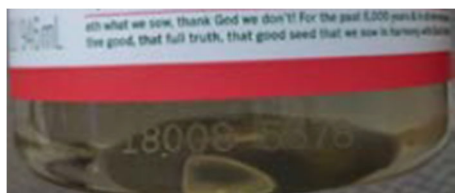
For the above Liquid Soap:

- 17 = represents the year the product was produced.
- 352 = represents the Julian Date in which the product was made.
- 5378 = represents the lot code.

### Sal Suds

Sal Suds is brought to our facility in bulk and has an internal co-manufacture lot number when they arrive. We record that lot number and assign a sequential four-digit number to that lot. Afterward, all bottles have one coding types.

**Production Run Coding:** Each bottle has a five-digit Julian date to indicate the fill date followed by the four-digit bulk lot code. For example, 18008 5378, which would be found at the bottom of the label, would be read as January 8th, 2018 bottling of bulk lot 5378. See figures below.



*Figure #2- Sal Suds*

For the above Sal Suds:

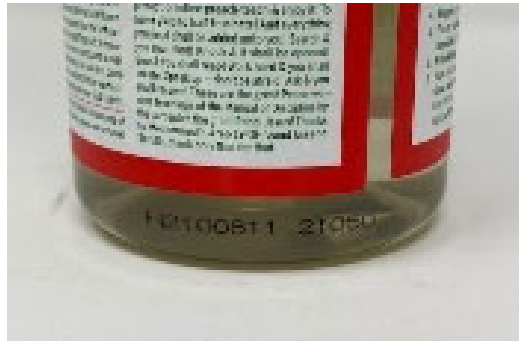
- **18** represents the year the product was produced.
- **008** represents the Julian Date in which the product was made.
- **5378** represents the lot code.



**DR. BRONNER'S  
ALL-ONE!**

In all we do, let us be generous, fair & loving to Spaceship Earth and all its inhabitants. For we're All-One or None! All-One!

Shipping: 1335 Park Center Dr., Vista, CA 92081  
Mailing: P.O. Box 1958, Vista, CA 92085  
Tel: 760.743.2211 | Fax: 760.745.6675  
www.drbronner.com



*Figure #3- Sal Suds, alternative*

For the above Sal Suds:

- **H** represents the contract manufacturer.
- **21** represents the year the product was produced.
- **008** represents the Julian Date in which the product was made.
- **11** represents the batch # of that day.
- **21060** represents the lot code or Julian Date in which the product was filled.

### Bar Soap

Dr. Bronner's Bar soaps have a four-digit Julian manufacturing date printed on each bar wrapper that is used as a lot code. See figure below for reference:



*Figure #4- Bar Soap*

For the above Bar Soap:

- **7** (1st digit) represents the year the product was produced.
- **117** (last three digits) represents the Julian Date in which the product was made.

### Body Balm (Magic Balm) & Lip Balm

Body and lip balm uses a base thirty-two numbering system instead of the traditional five- or six-digit Julian date method coding due to the limited space on the packaging. This number system is generated internally (1095-day shelf life). See figures below for the location of the body balm lot code and lip balm lot code.



*Figure #5 and 6- Body Balm (left), Lip Balm (right)*



### Body Lotion, Hair Rinse, Hair Crème, Shaving Soap

These items are contract manufactured. Body Lotion, Hair Rinse and Hair Crème, Shaving Soap feature a five digit Julian dating system to indicate manufacture date. For example, 20334 would be November 30th, 2020. (1095-day shelf life). See figures below.

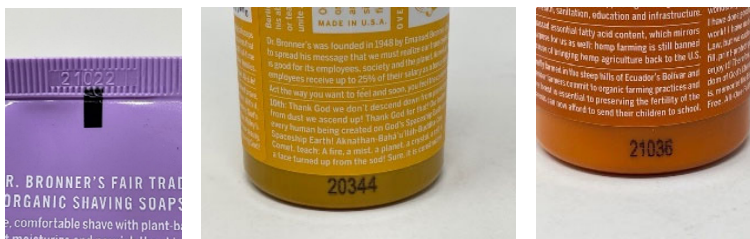


Figure #7, 8 and 9- Shaving Soap (left), Hair Rinse (middle), Lotion (right)

For the above Hair Rinse:

- 7 (1st digit) represents the year the product was produced.
- 334 (last three digits) represents the Julian Date in which the product was made.

### Hand Sanitizer

The hand sanitizer lot code consist of the expiration month and year. Depending on the contract manufacturer that produced the product, a time stamp may be included as well. See figures below.

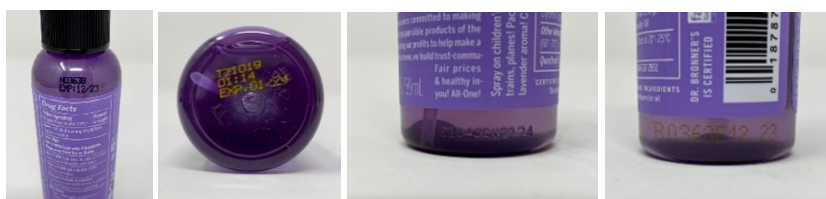


Figure #10-13- Various Hand Sanitizer coded by 4 different co-manufacturer

### Coconut Oil

Coconut oil jars have three lines on the lot code. See figure below.

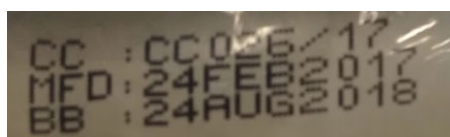


Figure #14- VCO

For the above Coconut Oil:

- CC###/YY (CC = Container Number, YY = Year Container Shipped) Ex. CC026/17 is the 26<sup>th</sup> lot from the year 2017
- MANUFACTURE DATE (MFD): dd/mmm/yyyy
- BEST BEFORE (BB): mm/dd/yyyy hh:mm (This date is 18 months after the packaging date)



### Toothpaste

These items are contract manufactured and feature a four or five digit Julian dating system to indicate manufacture date. For example, 9028 or 09028 would be January 28th, 2009. (1095-day shelf life). See figure below.



Figure #15 and 16- Toothpaste Cartons

For the above Toothpaste:

- **L or N** (letter) represents where the product was co manufactured.
- **8** represents the year the product was produced.
- **025** represents the Julian Date in which the product was made.
- **A** represents what shift it was produced on.

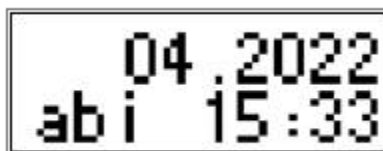
### Body Care Products Shelf Life

Dr. Bronner's body care products should be used within three years of purchase (1095-day shelf life). Soaps are self-preserving, but because our products are readily biodegradable, it's best to not leave them on the shelf for too long, as they may start to lose strength.

### Magic Chocolate Bars

The lot codes printed on wrapper and on case label are a 3-digit combination of letters. This sequence is traceable to manufacturing records. Lot number is followed by a time stamp indicating the time chocolate bar is packaged.

Dr. Bronner's Magic Chocolate bars are best when used within 20 months. The best by date, displayed as MM.YYYY, is 20 months from the date of manufacturing. See figure below.



Example: Lot abi; Best By date is April of 2022

Figure #17- Chocolate (rendering)